

# InDesign CS6

Export to PDF for high resolution  
CMYK

## Create a PDF export preset

- Under the File menu/Adobe PDF Presets/ Define... New...

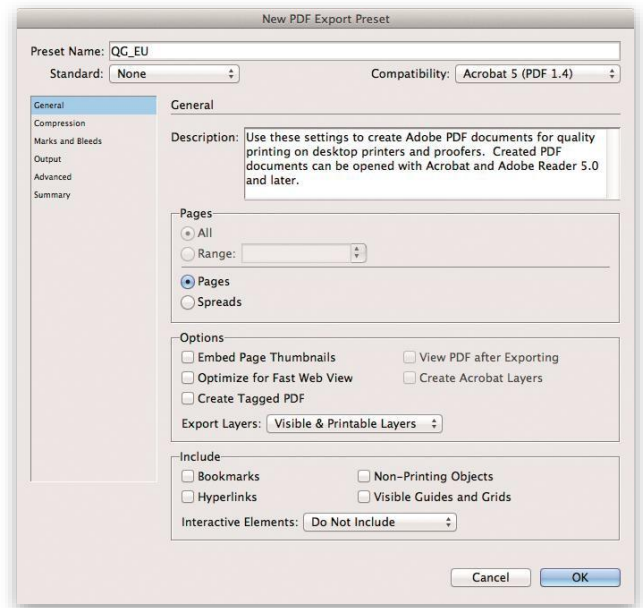


## General

- Name the preset

## Options

- Standard: None
- Compatibility: Acrobat 5 (PDF 1.4)



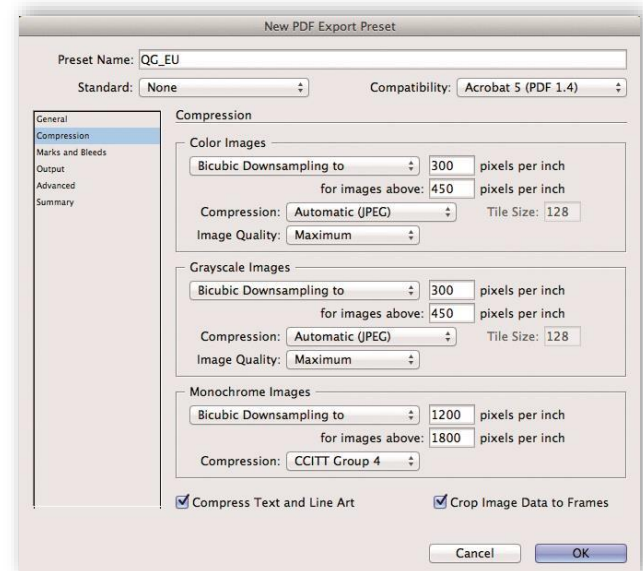
## Compression

### Color Images & Grayscale Images

- Bicubic Downsampling to 300 ppi for images above 450 ppi
- Compression: Automatic (JPEG)
- Image Quality: Maximum

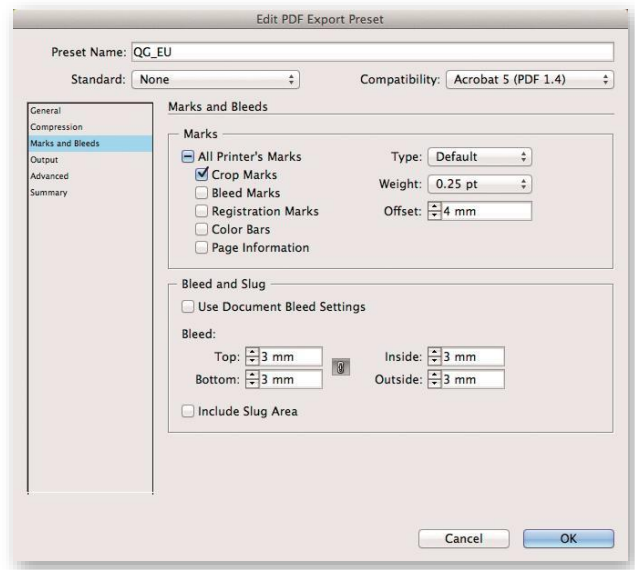
### Monochrome Images

- Bicubic Downsampling to 1200 for images above 1800 ppi
- Compression: CCITT Group 4
- Compress Text and Line Art: On
- Crop Image Data to Frames: On



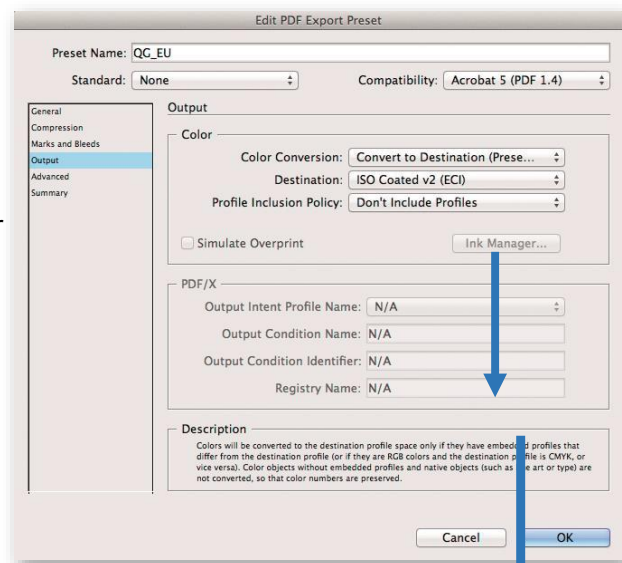
## Marks & Bleed

- CropMarks: On
- Page Information: Off
- Type: Default
- Weight: 0.25 pt
- Offset: 4mm
- Bleed: AllSides: 3mm



## Output

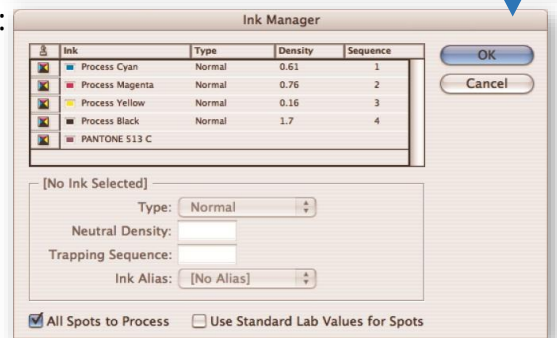
- Color Conversion  
Convert to Destination (Preserve Numbers)
- Destination: ICC Profile – according to the paper
- Profile Inclusion Policy: Don't Include Profiles



## Ink Manager

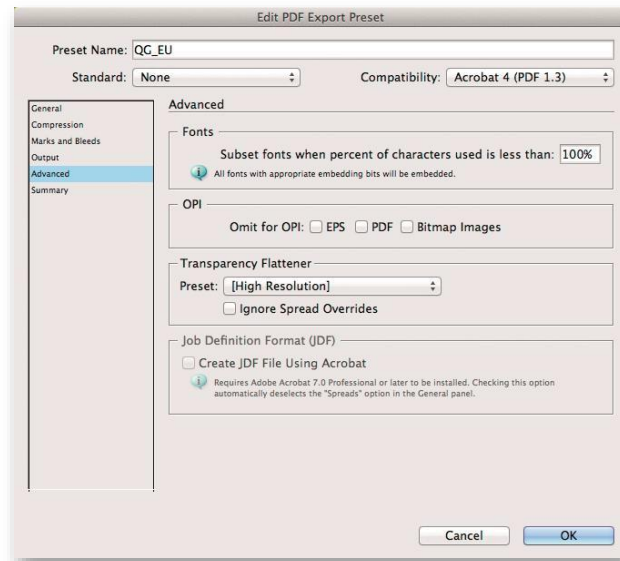
Ink Manager isn't available when creating an Export Preset. This setting is available at time of output, but only if there are spot colors used in your document:

- All Spots to Process: On (if you intend only CMYK output)
- All Spots to Process: Off (to retain spot color in final output)



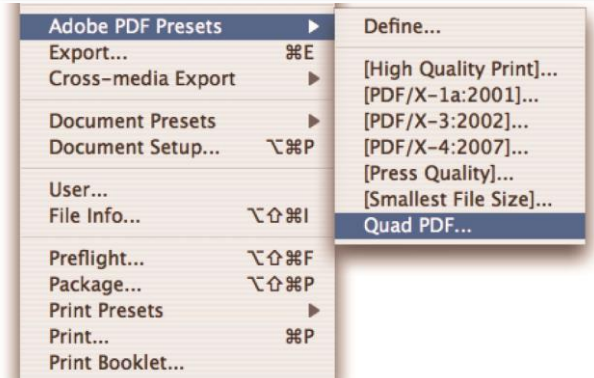
## Advanced

- Subset fonts when percent of characters used is less than: 100%
- Transparency Flattener Preset: High Resolution
- Ignore Spread Overrides: Off
  
- Click OK
- Click Done in the Adobe PDF Presets Dialog box



## Print using a preset

- Choose File/Adobe PDF Presets/desired Preset
- Or choose it from the Preset pull down at the top of the Export Dialog box.
- Quad requires single-page PDFs  
Always export one page at a time
- Check "All Spots to Process" in Ink Manager under the Output tab



## Saving and loading export presets

Instead of recreating it on all necessary workstations, save and archive the Export Preset for future use.

1. Choose File/Adobe PDF Presets/Define
2. Click on the Preset and then click Save As
3. Name and save it in the desired location

